

# PILLAR FITTING™

## Thread-to-Thread Fittings

PILLAR

Outstanding chemical resistance because of pipe fittings made of fluorocarbon polymers



### Excellent chemical resistance

All parts are made of PTFE or PFA, enabling this product to cope with various types of liquid chemicals.

### Clean and high quality

Integrated production covering materials, molding, processing, assembly, and cleaning is implemented in our own factory cleanrooms compliant with ISO 9001 and ISO 14001.

### How to tighten tapered pipe threads

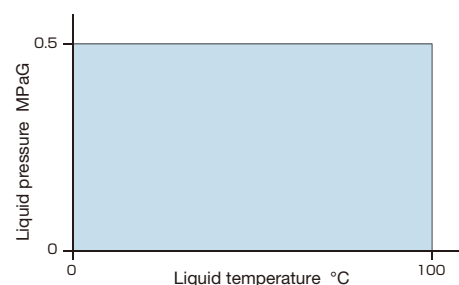
1. Winding sealing tape  
Wind sealing tape around the male thread one and half to two turns.
2. Tightening the thread  
Firmly tighten the thread by hand and then tighten it two to two and a quarter turns with an open-end wrench or similar tool. (Take care not to tighten the thread excessively.)

#### Specifications

- ▶ Maximum operating temperature: 100°C
- ▶ Maximum operating pressure: 0.5 MPa
- ▶ Applicable fluid: Liquid
- ▶ Mating thread materials: PFA and PTFE

\* If the mating thread material is anything other than the above, please consult with us separately.

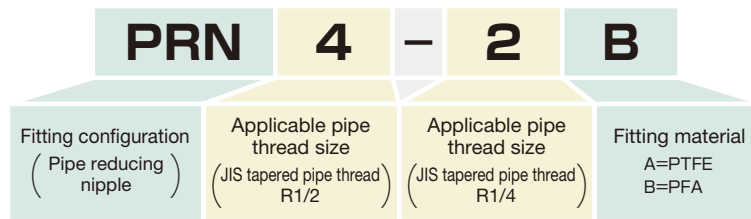
#### Operating range



# Thread-to-Thread Fittings

## How to order

For ordering, please indicate the desired cataloged product number.



## Applicable pipe thread representation

Pipe thread type	JIS tapered pipe thread					American National Standard pipe thread				
	R1/8,Rc1/8	R1/4,Rc1/4	R3/8,Rc3/8	R1/2,Rc1/2	R3/4,Rc3/4	NPT1/8	NPT1/4	NPT3/8	NPT1/2	NPT3/4
Representation	1	2	3	4	6	N1	N2	N3	N4	N6



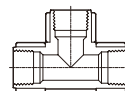
Pipe nipple ..... 2



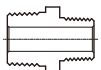
Pipe elbow ..... 4



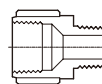
Pipe reducing nipple ..... 2



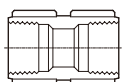
Pipe tee ..... 4



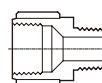
Pipe reducing nipple [R-NPT] ..... 2



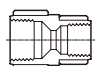
Pipe bushing ..... 5



Pipe coupling ..... 3



Pipe bushing [Rc-NPT] ..... 5



Pipe reducing coupling ..... 3

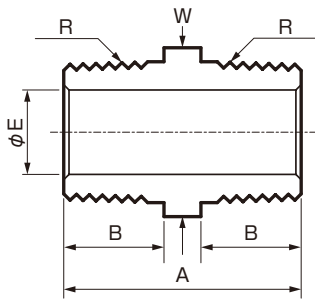


Pipe plug ..... 6

# Thread-to-Thread Fittings

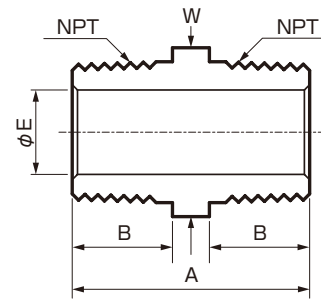
## ■ Pipe nipple

**R**



Part No.	R Thread size	A	B	φE	W
PN-1B	1/8	25	9	6	12
PN-2B	1/4	33	13	6	14
PN-3A	3/8	33	13	10	19
PN-4A	1/2	41	17	12	22
PN-6A	3/4	45	19	16	32

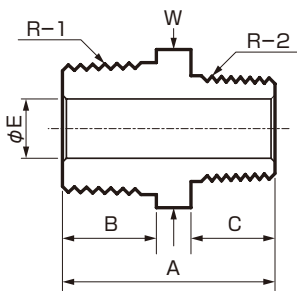
**NPT**



Part No.	NPT Thread size	A	B	φE	W
PN-N1A	1/8	25	9	5	12
PN-N2A	1/4	33	13	6	14
PN-N3A	3/8	33	13	10	19
PN-N4A	1/2	41	17	12	22
PN-N6A	3/4	45	19	16	32

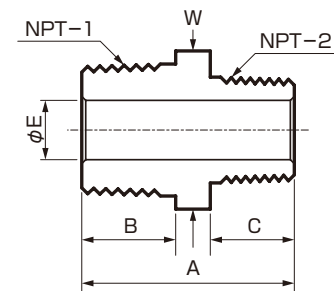
## ■ Pipe reducing nipple

**R**



Part No.	R-1 Thread size	R-2 Thread size	A	B	C	φE	W
PRN2-1B	1/4	1/8	29	13	9	6	14
PRN3-1B	3/8	1/8	29	13	9	6	17
PRN3-2B	3/8	1/4	33	13	13	6	17
PRN4-2B	1/2	1/4	37	17	13	6	22
PRN4-3A	1/2	3/8	37	17	13	10	22
PRN6-4A	3/4	1/2	43	19	17	12	32

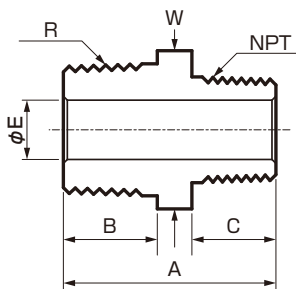
**NPT**



Part No.	NPT-1 Thread size	NPT-2 Thread size	A	B	C	φE	W
PRNN2-N1A	1/4	1/8	29	13	9	6	14
PRNN3-N1A	3/8	1/8	29	13	9	6	19
PRNN3-N2A	3/8	1/4	33	13	13	8	19
PRNN4-N2A	1/2	1/4	37	17	13	8	22
PRNN4-N3A	1/2	3/8	37	17	13	10	22
PRNN6-N4A	3/4	1/2	43	19	17	12	27

## ■ Pipe reducing nipple

**R-NPT**



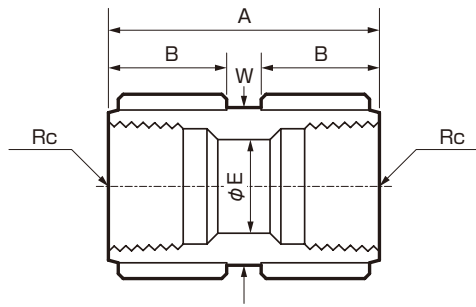
Part No.	R Thread size	NPT Thread size	A	B	C	φE	W
PRN1-N1A(R-NPT)	1/8	1/8	25	9	9	6	12
PRN1-N2A(R-NPT)	1/8	1/4	29	9	13	6	14
PRN2-N1A(R-NPT)	1/4	1/8	29	13	9	6	14
PRN2-N2B(R-NPT)	1/4	1/4	33	13	13	6	14
PRN2-N3A(R-NPT)	1/4	3/8	33	13	13	8	17
PRN3-N2A(R-NPT)	3/8	1/4	33	13	13	8	17
PRN3-N3A(R-NPT)	3/8	3/8	33	13	13	10	17
PRN3-N4A(R-NPT)	3/8	1/2	37	13	17	10	22
PRN4-N3A(R-NPT)	1/2	3/8	37	17	13	10	22
PRN4-N4A(R-NPT)	1/2	1/2	41	17	17	12	22
PRN4-N6A(R-NPT)	1/2	3/4	43	17	19	12	32
PRN6-N4A(R-NPT)	3/4	1/2	43	19	17	12	32
PRN6-N6A(R-NPT)	3/4	3/4	45	19	19	16	32

Threads with the fitting center step grooved are NPT threads.  
Unit: mm W: Square width across flats

# Thread-to-Thread Fittings

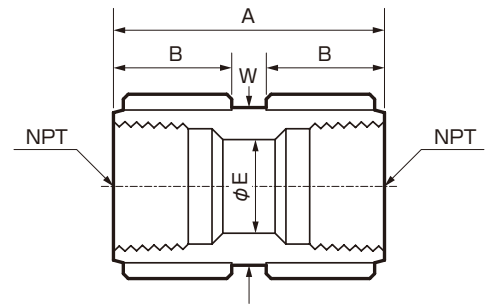
## ■ Pipe coupling

Rc



Part No.	Rc Thread size	A	B	ΦE	W
PC-1A-B	1/8	35	14	6	17
PC-2B-B	1/4	39	16	8	19
PC-3A-B	3/8	43	18	10	22
PC-4A-B	1/2	47	20	12	27
PC-6A-B	3/4	55	24	19	32

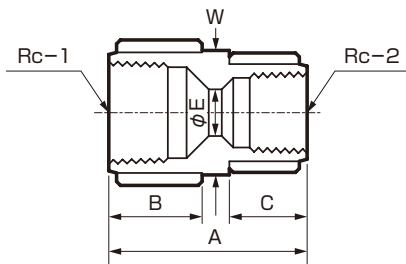
NPT



Part No.	NPT Thread size	A	B	ΦE	W
PC-N1A-B	1/8	35	14	6	17
PC-N2A-B	1/4	39	16	8	19
PC-N3A-B	3/8	43	18	10	22
PC-N4A-B	1/2	47	20	12	27
PC-N6A-B	3/4	55	24	19	32

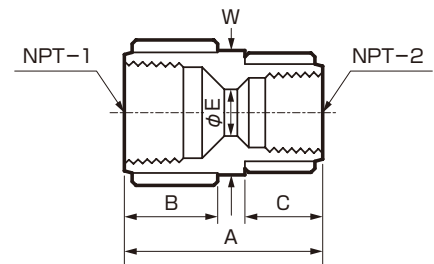
## ■ Pipe reducing coupling

Rc



Part No.	Rc-1 Thread size	Rc-2 Thread size	A	B	C	ΦE	W
PRC2-1A-B	1/4	1/8	37	16	14	6	19
PRC3-1A-B	3/8	1/8	39	18	14	6	22
PRC3-2A-B	3/8	1/4	41	18	16	8	22
PRC4-2A-B	1/2	1/4	43	20	16	8	27
PRC4-3A-B	1/2	3/8	45	20	18	10	27
PRC6-4A-B	3/4	1/2	51	24	20	12	32

NPT



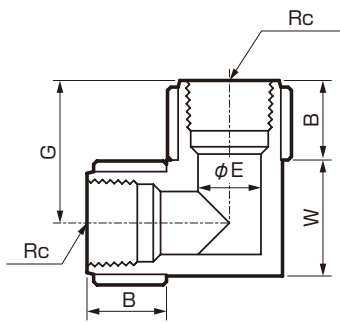
Part No.	NPT-1 Thread size	NPT-2 Thread size	A	B	C	ΦE	W
PRCN2-N1A-B	1/4	1/8	37	16	14	6	19
PRCN3-N1A-B	3/8	1/8	39	18	14	6	22
PRCN3-N2A-B	3/8	1/4	41	18	16	8	22
PRCN4-N2A-B	1/2	1/4	43	20	16	8	27
PRCN4-N3A-B	1/2	3/8	45	20	18	10	27
PRCN6-N4A-B	3/4	1/2	51	24	20	12	32

Unit: mm W: Square width across flats

# Thread-to-Thread Fittings

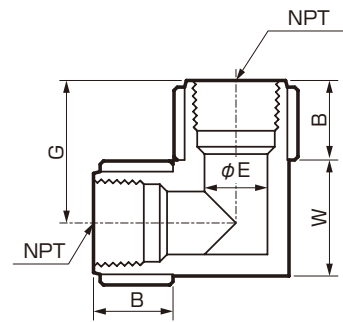
## ■ Pipe elbow

Rc



Part No.	Rc Thread size	B	ϕE	G	W
PE-1A-B	1/8	14	6	23.5	18
PE-2A-B	1/4	16	8	27	20.5
PE-3A-B	3/8	18	10	30.5	23.5
PE-4A-B	1/2	20	12	35.5	29
PE-6A-B	3/4	24	19	43	35

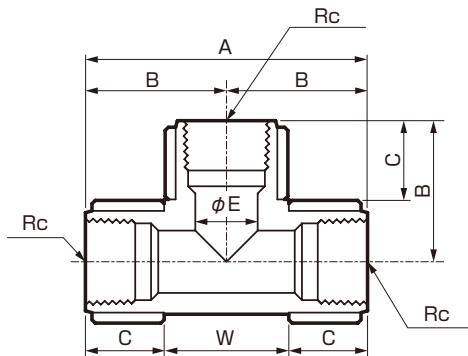
NPT



Part No.	NPT Thread size	B	ϕE	G	W
PE-N1A-B	1/8	14	6	23.5	18
PE-N2A-B	1/4	16	8	27	20.5
PE-N3A-B	3/8	18	10	30.5	23.5
PE-N4A-B	1/2	20	12	35	28.5
PE-N6A-B	3/4	24	19	43	35

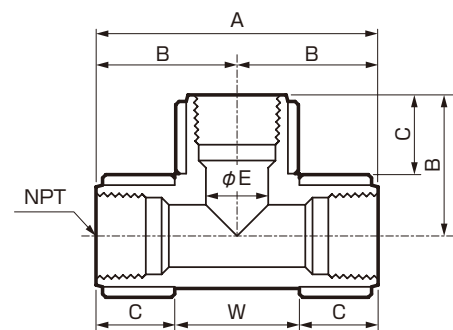
## ■ Pipe tee

Rc



Part No.	Rc Thread size	A	B	C	ϕE	W
PT-1A-B	1/8	47	23.5	14	6	19
PT-2A-B	1/4	54	27	16	8	22
PT-3A-B	3/8	61	30.5	18	10	25
PT-4A-B	1/2	71	35.5	20	12	31
PT-6A-B	3/4	86	43	24	19	38

NPT



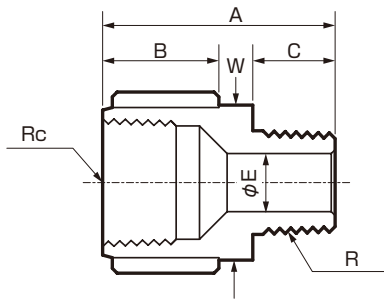
Part No.	NPT Thread size	A	B	C	ϕE	W
PT-N1A-B	1/8	47	23.5	14	6	19
PT-N2A-B	1/4	54	27	16	8	22
PT-N3A-B	3/8	61	30.5	18	10	25
PT-N4A-B	1/2	71	35.5	20	12	31
PT-N6A-B	3/4	86	43	24	19	38

Unit: mm W: Square width across flats

# Thread-to-Thread Fittings

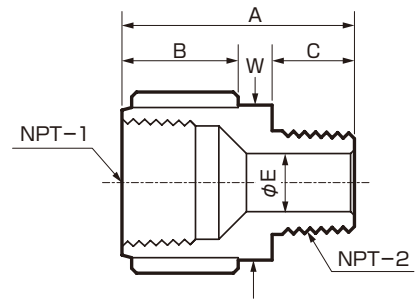
## ■ Pipe bushing

### Rc-R



Part No.	Rc Thread size	R Thread size	A	B	C	$\phi E$	W
PB2-1A-B	1/4	1/8	32	16	9	6	19
PB3-2A-B	3/8	1/4	38	18	13	8	22
PB4-2A-B	1/2	1/4	40	20	13	8	27
PB4-3A-B	1/2	3/8	40	20	13	10	27
PB6-4A-B	3/4	1/2	48	24	17	12	32

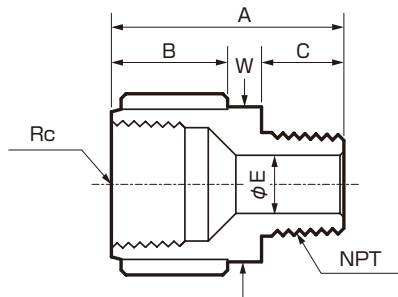
### NPT



Part No.	NPT-1 Thread size	NPT-2 Thread size	A	B	C	$\phi E$	W
PBN2-N1A-B	1/4	1/8	32	16	9	6	19
PBN3-N2A-B	3/8	1/4	38	18	13	8	22
PBN4-N2A-B	1/2	1/4	40	20	13	8	27
PBN4-N3A-B	1/2	3/8	40	20	13	10	27
PBN6-N4A-B	3/4	1/2	48	24	17	12	32

## ■ Pipe bushing

### Rc-NPT



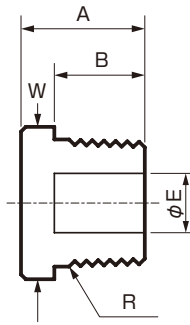
Part No.	Rc Thread size	NPT Thread size	A	B	C	$\phi E$	W
PB1-N1A-B(Rc-NPT)	1/8	1/8	30	14	9	6	17
PB2-N1A-B(Rc-NPT)	1/4	1/8	32	16	9	6	19
PB2-N2A-B(Rc-NPT)	1/4	1/4	36	16	13	8	19
PB3-N2A-B(Rc-NPT)	3/8	1/4	38	18	13	8	22
PB3-N3A-B(Rc-NPT)	3/8	3/8	38	18	13	10	22
PB4-N2A-B(Rc-NPT)	1/2	1/4	40	20	13	8	27
PB4-N3A-B(Rc-NPT)	1/2	3/8	40	20	13	10	27
PB4-N4A-B(Rc-NPT)	1/2	1/2	44	20	17	12	27
PB6-N4A-B(Rc-NPT)	3/4	1/2	48	24	17	12	32
PB6-N6A-B(Rc-NPT)	3/4	3/4	50	24	19	19	32

Unit: mm W: Square width across flats

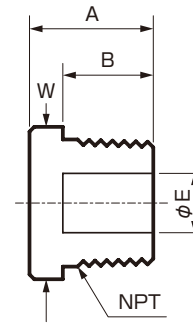
# Thread-to-Thread Fittings

## ■ Pipe plug

R



NPT



Part No.	R Thread size	A	B	W	ϕE
PP-1B	1/8	16	9	12	4.4
PP-2B	1/4	20	13	14	6
PP-3B	3/8	20	13	18	10
PP-4B	1/2	24	17	22	12
PP-6B	3/4	26	19	28	16

Part No.	NPT Thread size	A	B	W	ϕE
PP-N1B	1/8	16	9	12	4.4
PP-N2B	1/4	20	13	14	6
PP-N3B	3/8	20	13	18	10
PP-N4B	1/2	24	17	22	12
PP-N6B	3/4	26	19	28	16

Unit: mm W: Square width across flats



***PILLAR*** NIPPON PILLAR PACKING CO., LTD.

Head office/Sales Headquarters  
7-1, Shinmachi 1-chome, Nishi-ku, Osaka 550-0013, Japan  
Phone: +81-6-7166-8326 Fax: +81-6-7166-8514

Email : sales@pillar.co.jp

<https://www3.pillar.co.jp/en/product/>



 <b>Safety precaution</b>	● When using this product, please use correctly and pay sufficient attention to safety.
--	---

\* Please understand that this catalog may change without prior notice.  
\* The values shown on this catalog are reference values, not guaranteed values.

